

ABC produces four extruded aluminum wireways designed to reduce the cost of labor hours required for custom building wireways of sheet metal. These special extruded wireways and covers are of superior quality and strength, will not rust, and have special features which are not possible with sheet metal. They are available in 26 foot long stock lengths.

The Incandescent Lamp Wireway and Cover is made to attach to the ABC Large or Small A/Flexframe C-Covers or to the Flat Retainer face as illustrated below. It may also be used for lamp borders on neon signs and buildings. There is a groove on the underside of the Cover to center the punch for holes.

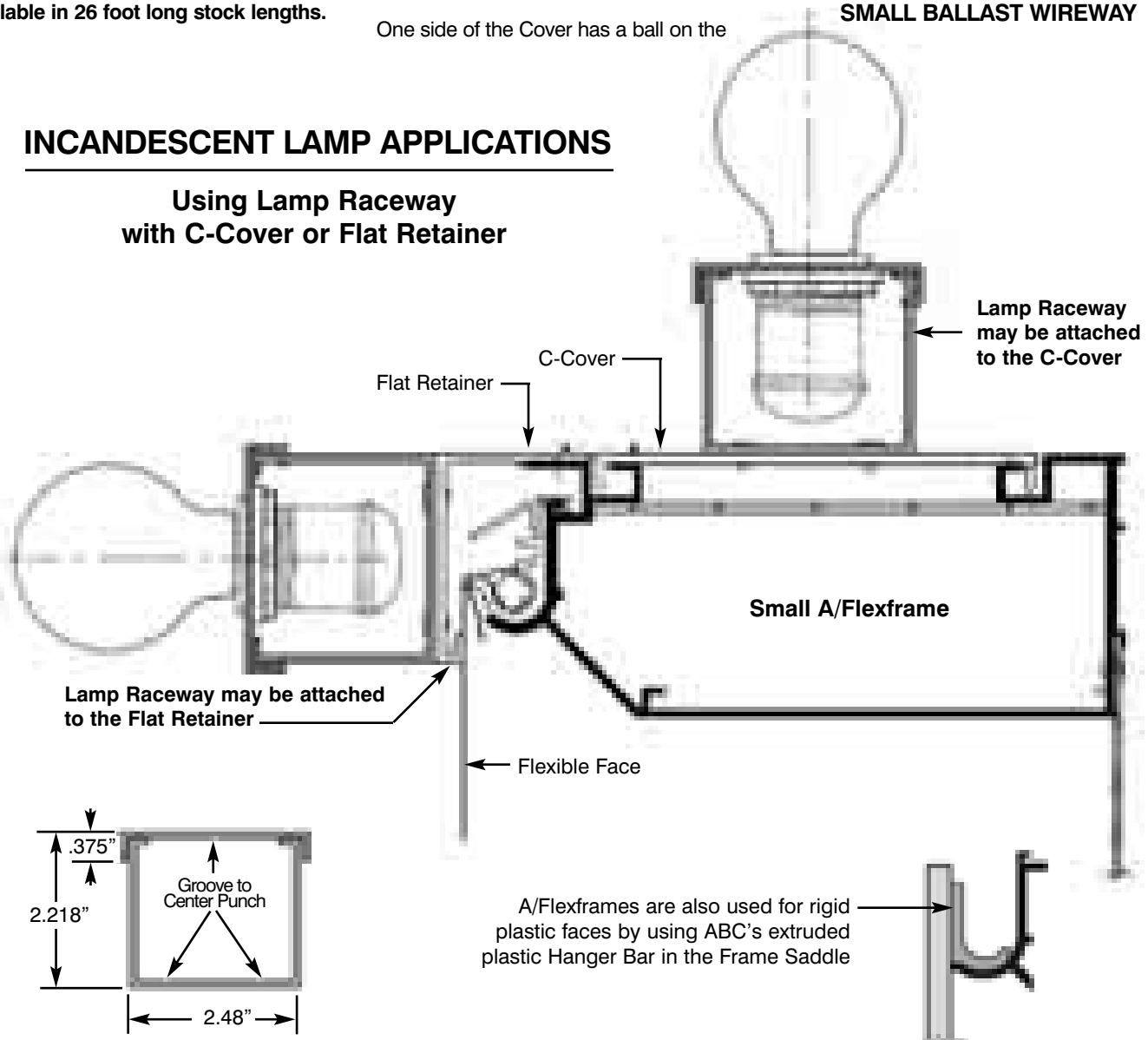
flange which fits an indent on one side of the Wireway. A drill guide groove for screws is provided on the other side. This reduces the required fasteners by one-half.

One side of the Cover has a ball on the

SMALL BALLAST WIREWAY

INCANDESCENT LAMP APPLICATIONS

Using Lamp Raceway with C-Cover or Flat Retainer



INCANDESCENT LAMP WIREWAY

Please contact ABC if you have any questions:
2028 SE Frontage Road, Fort Collins, Colorado 80525
Toll-Free: 800-248-9889 Fax: 970-482-4019 Email: abcsigns@abcsignproducts.com

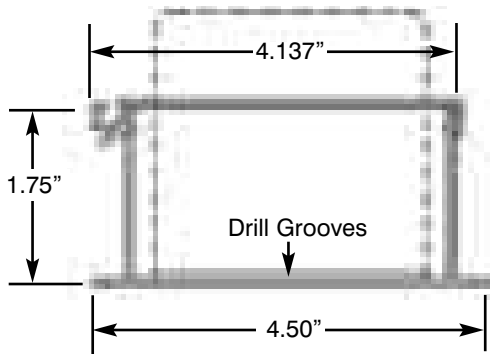
The parts described on this page are covered by one or more of the following patents:
U.S. 4,007,552 4,265,039
CANADIAN 1,021,565 1,149,159 1,170,048 1,170,049 1,170,050



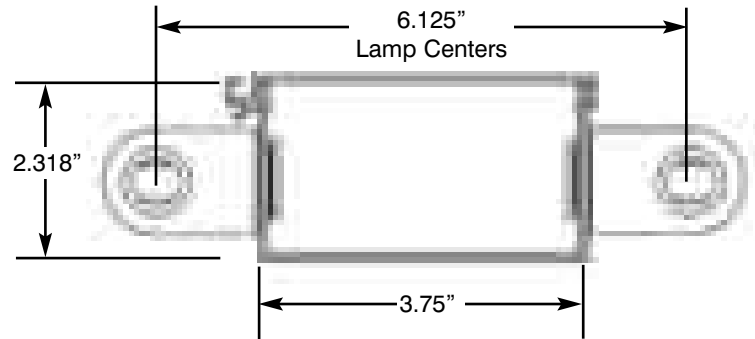
ABC Deck Wireway Extrusions (cont.)

ABC's "Easy Sheet" series on building extruded aluminum sign frames - 01/01

BALLAST WIREWAYS



ABC offers two Ballast Wireways. Our Small Ballast Wireway has been revised to make it taller and wider than it was originally, to give more room for wiring around the ballast. Note the new dimensions and features illustrated.



In response to requests, we have produced a more versatile, taller Ballast Wireway. It is the same width as the Small Ballast Wireway, to give generous room for wiring around the ballast. The added height allows the use of Tombstone Lamp Sockets to be used on each side making it a self-contained, two-lamp fixture.

**ILLUSTRATIONS
ARE ONE-HALF
ACTUAL SIZE**

LARGE BALLAST WIREWAY

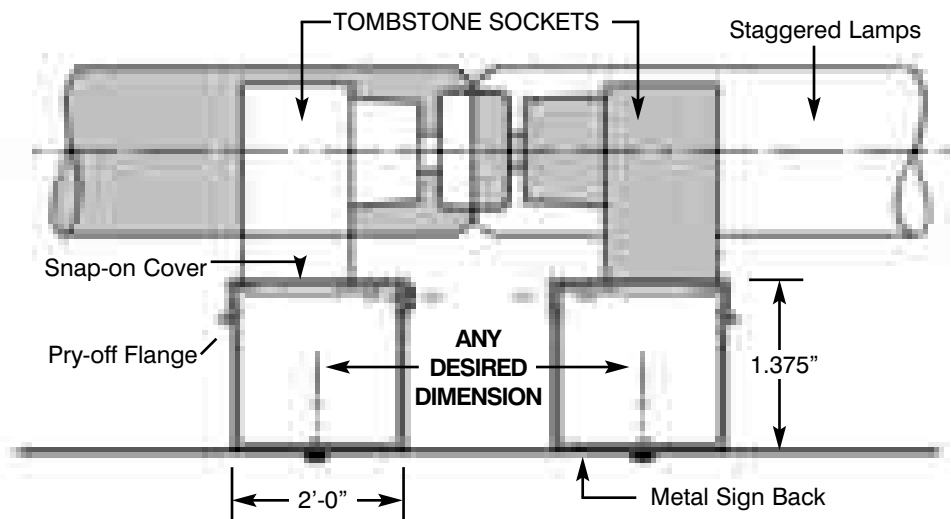
INTERMEDIATE WIREWAY EXTRUSION

INTERMEDIATE WIREWAY EXTRUSIONS

When any sign is longer or taller than the longest lamps, intermediate wireways are necessary to overlap the lamp sockets to avoid dark areas, and to enclose the wiring to meet U.L. requirements. The ABC INTERMEDIATE WIREWAY is a small, light weight extruded channel, with a snap-on cover. The cover can be removed by using a tool in a twisting motion to pry the cover open.

By using two wireways side by side, set any given distance apart, any amount of lamp overlap is possible, to fit any cabinet size. These wireways are neat, easily cut to length, create no shadow, do not require painting and save a lot of custom fabrication labor.

INTERMEDIATE WIREWAY FOR OVERLAPPING LAMPS



ABC'S EXPERT SALESPEOPLE ARE ALWAYS AS CLOSE AS YOUR PHONE OR FAX!